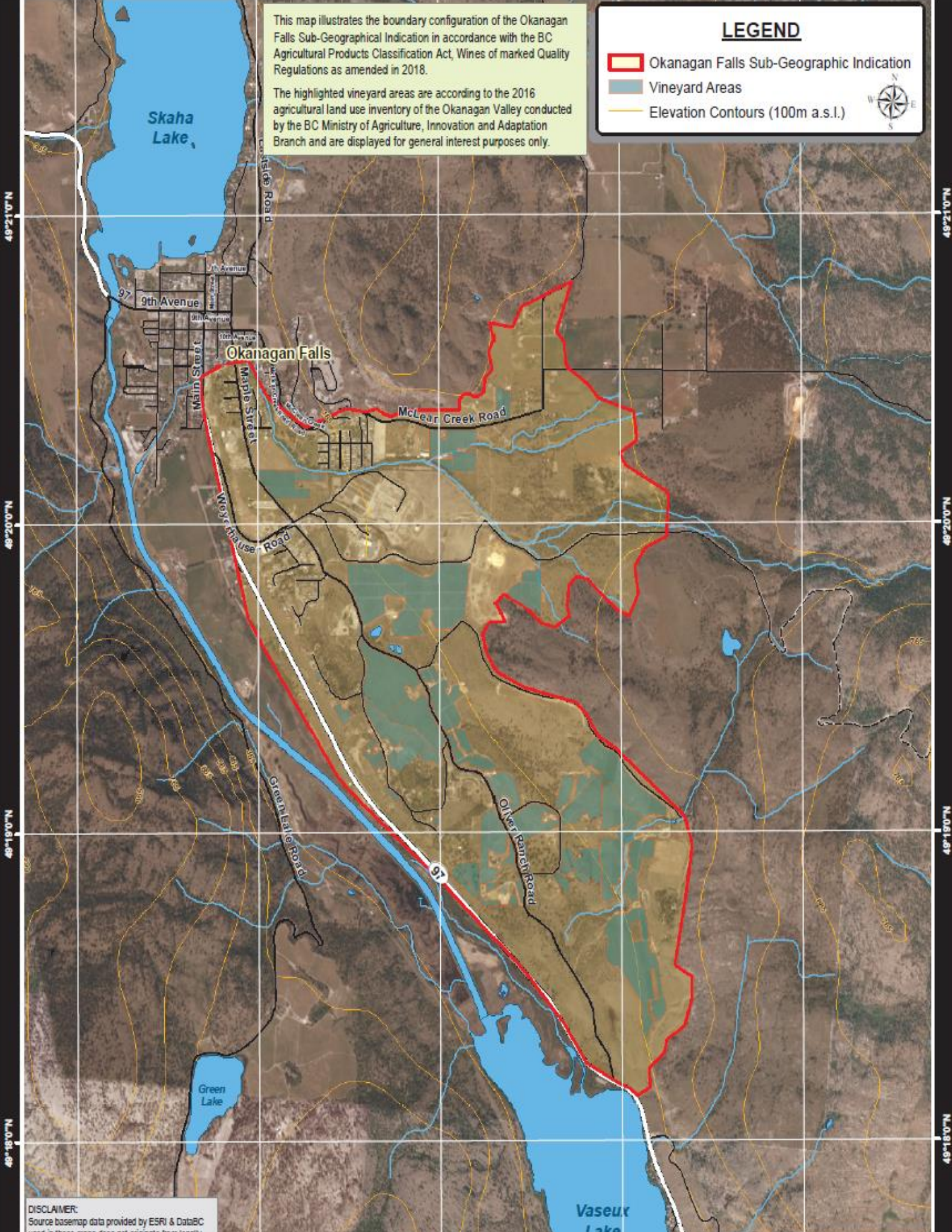


This map illustrates the boundary configuration of the Okanagan Falls Sub-Geographical Indication in accordance with the BC Agricultural Products Classification Act, Wines of marked Quality Regulations as amended in 2018.

The highlighted vineyard areas are according to the 2016 agricultural land use inventory of the Okanagan Valley conducted by the BC Ministry of Agriculture, Innovation and Adaptation Branch and are displayed for general interest purposes only.

LEGEND

-  Okanagan Falls Sub-Geographic Indication
-  Vineyard Areas
-  Elevation Contours (100m a.s.l.)



DISCLAIMER:
Source basemap data provided by ESRI & DataBC
used in these maps does not originate from legally
registered owners. It is part of a GIS database system.

CREDITS: